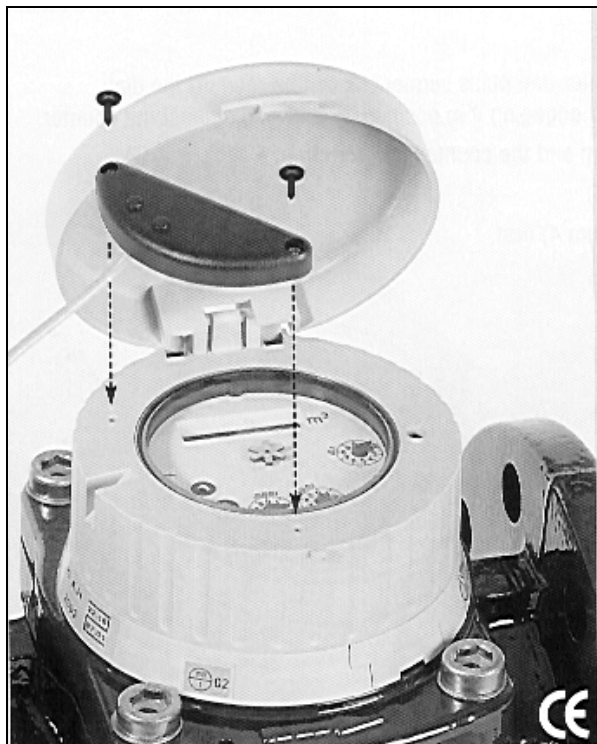


## DATAWATER WOLTMANN METER INFRARED REFLEX PULSE TRANSMITTER



### CHARACTERISTICS

“Infrared reflex” pulse emitter suitable to be used with the DATAWATER line Woltmann meters, for the models WP (horizontal helix), WS (vertical helix), WPV (compound meter).

In combination with a reflex impeller serially integrated in the totalizer unit, gives a high resolution pulse frequency proportional to the flow.

The output signal can be used for remote counters, batchings, etc.

- Easy installation or replacement of the sensor, without affecting the calibration/verification of the meter.
- The meter is pre-equipped for one pulse output.
- Sensors easily replaced without adversely affecting the water meter calibration
- Interference free scanning

### PULSE VALUES AVAILABLE

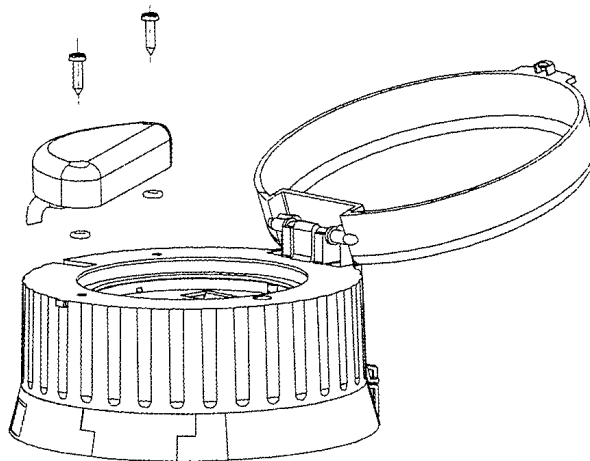
DATAWATER WP	DN 50 - 125 mm	DN 150 - 300 mm	DN 400 - 500 mm
Pre-equipment (l/pulses)	1	10	100

DATAWATER WS	DN 50 - 100 mm	DN 150 mm
Pre-equipment (l/pulses)	1	10

## TECHNICAL CHARACTERISTICS

Operating voltage:	4.0 – 24.0 V
Current at L-level:	0.9 – 1.0 mA
Current at H-level:	3.0 – 3.4 mA
Protection Class:	IP 68
Pulse width:	1 ms
Metering frequency range:	0 – 70 Hz
Cable connection:	-white, +brown, screen
EMC standard test:	Interference emission EN 50081-1/1.92 interference immunity EN 500052-2/3.95
Cable length (standard):	2 m (10 m on request)
Execution of cable:	3 X 0.25 mm <sup>2</sup>
Working Temperature:	-25°C +85°C Max
Storage temperature:	-45°C + 90°C Max
Weight:	80 g

## INSTALLATION INSTRUCTIONS



The pulse transmitter is installed using two fixing screws (see illustration)



**MADDALENA S.R.L.**

P.O. BOX 227 - 33100 UDINE (ITALY) - Tel +39.0432.634811 - Fax +39.0432.679820 - E-mail: [info@maddalena.it](mailto:info@maddalena.it)